

Museum Engagement Tactics

Lessons Learned from Henry Ossawa Tanner House and
the Climate Crisis Heritage Project

Presentations by Christopher Rogers and Aislinn Pentecost Farren
Moderated by Daniel Tucker
(Small Museums, 2024)

SAVE THE TANNER HOUSE



LED BY THE FRIENDS OF THE TANNER HOUSE

SAVETHETANNERHOUSE.ORG





The Banjo Lesson, 1893
The Thankful Poor, 1894



Standing (back row): Henry Ossawa Tanner (1858-1937), Carlton Miller Tanner (1870-1933), Sarah Elizabeth Tanner (later Moore) (1873-1901). Seated (middle row): Isabelle "Bell" Tanner (later Temple) (1867-1956), Halle Tanner (later Dillon, Johnson) (1864-1901), Bishop Benjamin Tucker Tanner (1835-1923), Sara Elizabeth (Miller) Tanner (1841-1914), Mary Louise Tanner (later Mossell) (1866-1935). Children in front: first grandchild Sadie Dillon (later Harrison, Fulford) (1888-1949), Bertha Tanner (later Stafford) (1878-1962). Photograph probably taken in Philadelphia.

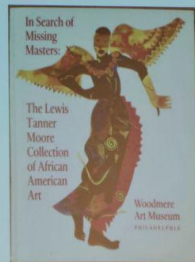
“The possibilities for the Tanner House represent the growth, development, and rich cultural life of Black North Philadelphia — a community of which the greater Tanner family was part of, and which continues to evolve and thrive.”

Panel: *Community-Inspired Arts & Arts-Inspired Communities*

Lewis Tanner Moore

George Anthony Morton

YASP Fellow (Josh
Supera)



Atelier South





NAME:

AGE:

ZIP:

This survey project helps us collect and preserve community wisdom to inspire future renovations and programming for the Henry Ossawa Tanner House. We thank you endlessly for your contribution.

FOR LOVE TO THRIVE IN OUR NEIGHBORHOOD...

"Love as a force of connection, drawing us together into more dense and full and honest and joyful relationships with one another, with other creatures, with the earth." - **Ashon Crawley**

**WHAT ACTIVITIES SHOULD
GATHER US TOGETHER?**

**WHO ARE PEOPLE WE SHOULD
HONOR OR CELEBRATE?**

**WHAT HISTORIES SHOULD WE
LEARN ABOUT AS A COMMUNITY?**

**WHAT ACTIVITIES SHOULD WE ORGANIZE TO
IMPROVE OUR NEIGHBORHOOD?**

**WHAT STORIES SHOULD WE SHARE TO HELP
OUR COMMUNITY HEAL?**



**THE FRIENDS OF THE TANNER HOUSE:
SELECTIONS FROM THE COMMUNITY
ARTIST PARTNER SERIES
AN EXHIBITION AT THE CECIL B. MOORE FREE LIBRARY**

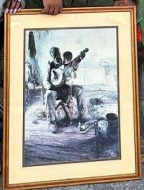
**OPEN FEB. 9-24TH
CLOSING RECEPTION
FEB. 24TH NOON TIL 2PM**





HENRY O. TANNER
1859-1939
While living here, Tanner studied at the Pennsylvania Academy of the Fine Arts. He created the original masterpieces of African American art. A few painted in Paris. Tanner's subjects and won international acclaim.

2308
G.R. CONSTRUCTION
2017-2157-1808





Building a Public History of the Climate Crisis

Aislinn Pentecost-Farren
Philadelphia, PA
www.aislinn.info

ALLIANCE BLOG

Earth Works: Establishing a Green Team at Your Museum

Posted on Oct 20, 2023

ENVIRONMENTAL SUSTAINABILITY

Applying LEED to Museum Projects

Posted on Jun 20, 2023

Climate change has become one of the most significant threats to World Heritage properties, potentially impacting their Outstanding Universal Value, including their integrity and authenticity, and their potential for economic and social development at the local level.

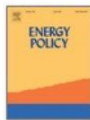
Climate Change and World Heritage





Energy Policy

Volume 28, Issue 12, 1 October 2000, Pages 817-830



Understanding carbon lock-in

Gregory C Unruh  

[Show more](#) 

[+](#) Add to Mendeley [🔗](#) Share [🔖](#) Cite

[https://doi.org/10.1016/S0301-4215\(00\)00070-7](https://doi.org/10.1016/S0301-4215(00)00070-7)

[Get rights and content](#)

Abstract

This paper narrative argues that **industrial economies** have been locked into fossil fuel-based energy systems through a process of technological and institutional co-evolution driven by path-dependent increasing returns to scale. It is asserted that this condition, termed *carbon lock-in*, creates persistent market and policy failures that can inhibit the



Atmospheric Environment

Volume 43, Issue 12, April 2009, Pages 2084-2086



Short communication

A new look at atmospheric carbon dioxide

David J. Hofmann  , James H. Butler, Pieter P. Tans

[Show more](#) 

[+](#) Add to Mendeley [🔗](#) Share [🔖](#) Cite

<https://doi.org/10.1016/j.atmosenv.2008.12.028>

[Get rights and content](#)

Abstract

Carbon dioxide is increasing in the atmosphere and is of considerable concern in global climate change because of its greenhouse gas warming potential. The rate of increase has accelerated since measurements began at Mauna Loa Observatory in 1958 where carbon dioxide increased from less than 1 part per million per year (ppm yr^{-1}) prior to 1970 to more than 2 ppm yr^{-1} in recent years. Here we show that the anthropogenic component (atmospheric value reduced by the **pre-industrial value** of



Challenges Tools

and

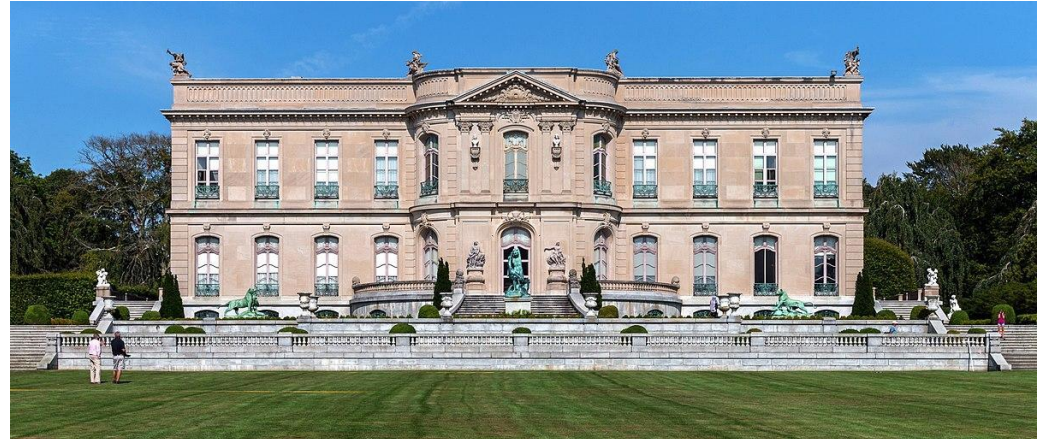
- Too abstract
- Not connected to our assets/collections

Challenges Tools

and

- Too abstract
 - Not connected to our assets/collections

This history and material culture is already researched and preserved, just needs to be connected to this story



Challenges

- Worry about controversy from climate deniers

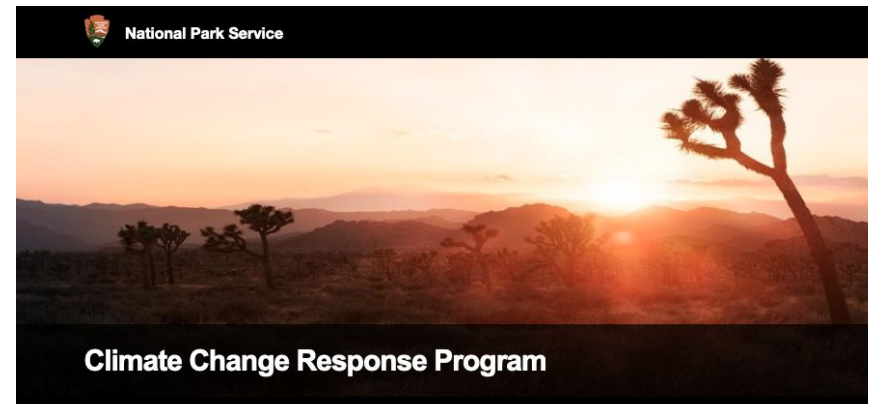
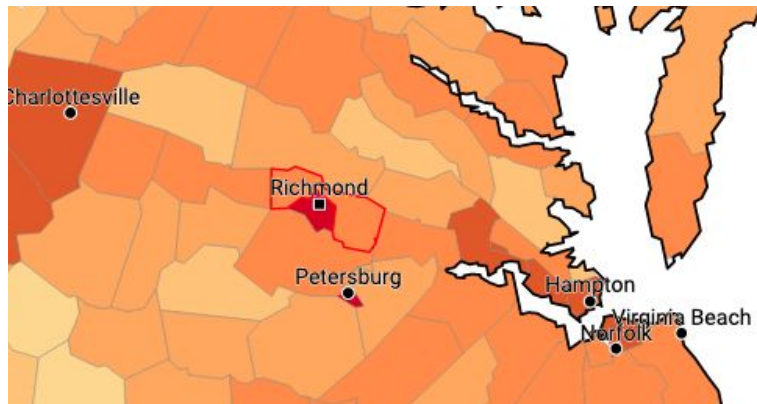
Challenges Tools

and

- Worry about controversy from climate deniers

We can feel confident telling climate stories:

- Yale CCC
- National Park Service



Challenges

- Don't want to be depressing
 - Climate despair

Challenges Tools

and

- Energy transitions are possible!
- NPS History and Hope
 - Toolkit by Donna Graves and NPS



- Don't want to be depressing
 - Climate despair

- Difficult histories resources
 - AASLH Guide by Julie Rose



United Nations Climate Change

COP27
SHARM EL-SHEIKH
EGYPT 2022





Aislinn Pentecost-Farren
www.aislinn.info

Lessons from Tanner House Organizing

- Build an army of the willing. **There's no magic, just labor.**
- Get comfortable with trusting the process. **Get comfortable with the art of storytelling.**
- Build a base of relationships in the community AND leverage institutions! **It's a both/and!** Collaborate AND always learn along the way.
- **TRANSPARENCY!** Communicate the “how”, it builds shared trust and accountability you'll need to grow.
- Plan, plan, prepare, prepare. **Prep the land, sow the seed, and know sometimes all you can do is pray for rain.**